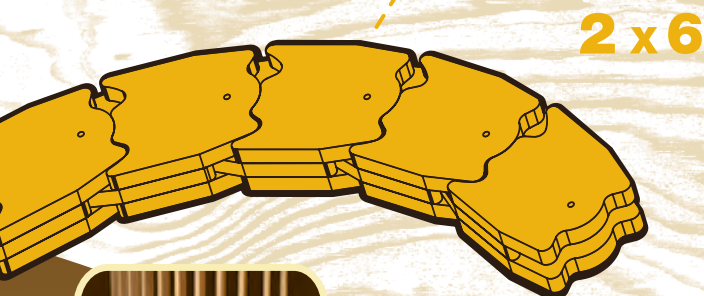


2 Nail/staple into pivot area to lock shape



Adding distinctive features to a home is quicker and simpler than ever!

Quick Curve Plate is an extremely easy-to-use plywood framing product for curved framing applications such as curved walls, ceilings, soffits, alcoves — nearly any architectural feature you can dream up! It provides a solid framework giving every project smooth and easy-to-finish curves. And best of all, you can fasten wall coverings and moldings directly to it—so no new installation techniques or tools are necessary!

FLEX-ABILITY CONCEPTS

TOLL FREE 866.443.FLEX (866.443.3539)
TEL 405.996.5343 **FAX** 405.996.5353

5500 West Reno Avenue, Suite 300
Oklahoma City, OK 73127
www.flexabilityconcepts.com
email info@flexabilityconcepts.com

14-1018

Quick Curve
PLATE

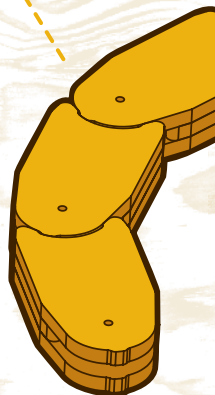


More time saving innovations from "The Curved Wall People"

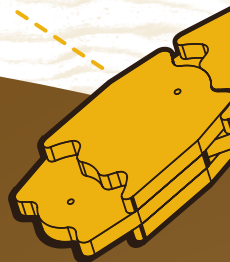
NEW & IMPROVED
Quick Curve
PLATE
PRESSURE TREATED

Quick Curve PLATE

1 Shape to
desired position



3 Install as you
would other
framing members



Nothing's Faster!

- ▶ Shape it by hand
- ▶ Secure the shape with nails or staples
- ▶ Plywood sections link easily to form any length
- ▶ Works with typical wood 2x4 or 2x6 (top & bottom plates)
- ▶ Nail, cut & anchor with same tools used for lumber
- ▶ Use as curved vertical studs (non-load bearing)
- ▶ Minimum outside radius 2x4: 12"
Minimum outside radius 2x6: 18"

Treated Quick Curve Plate!



2 x 6



2 x 4

**Pressure-Preservative
Treated**

NEW & IMPROVED

**Quick
Curve
PLATE**

PRESSURE TREATED